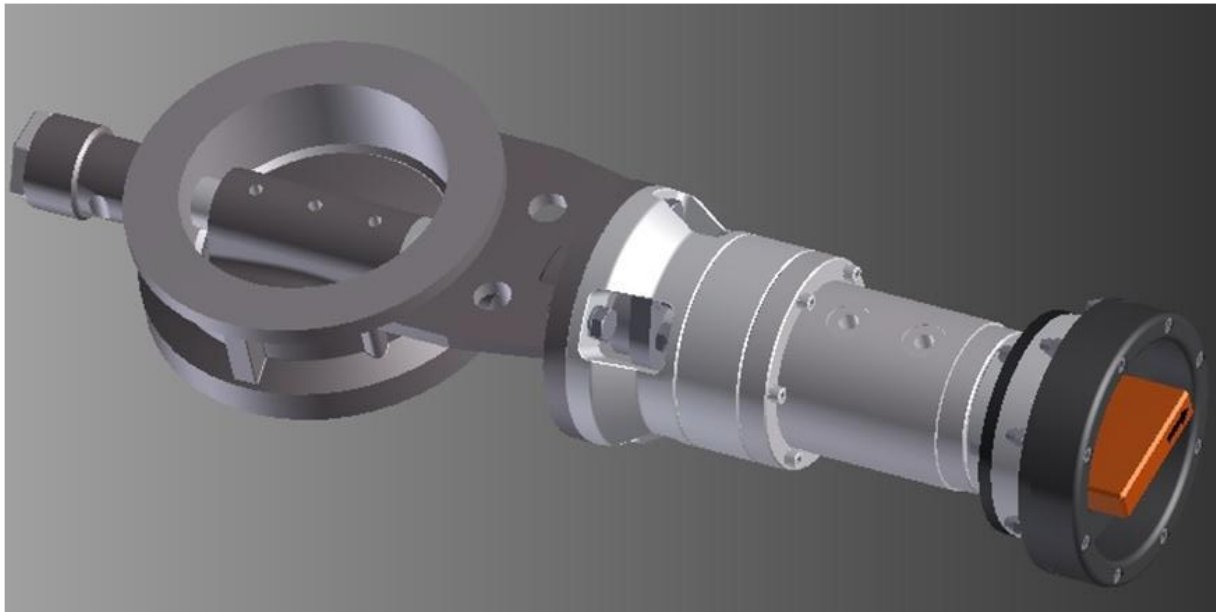


## SUBSEA BUTTERFLY HYDRAULIC VALVE

---



---

The **Subsea Butterfly Valve/Actuator** is hydraulically operated and has a mechanical valve interface, so that ROVs can override the valve using the manipulator. The actuator can be delivered with smaller and larger valves, depending on customer needs.

### SPECIFICATIONS

Type	Butterfly Valve/Actuator
Model	6"
Part Number	6378-001
Material	316L
Weight Air	37 kg
Weight Water	32 kg
Diameter Ø	109 mm