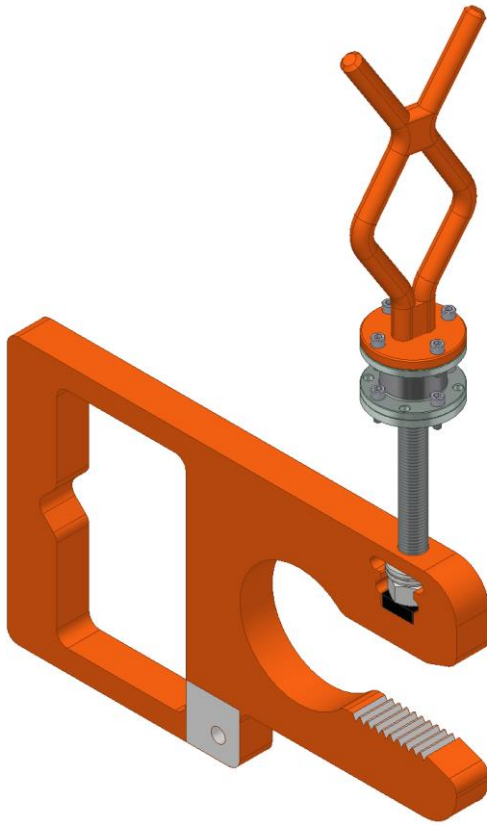


SUBSEA GROUND POINT



The **Subsea Ground Point** is a universal ground point that can be mounted on metal surfaces. The ground point opening is placed onto the structure and secured in place by operating the ROV handle. The structure is designed tension up when the handle is turned and tightened up. This in combination with two-disc springs in the ROV handle mechanism ensures that the ground point is properly secured to the metal.

SPECIFICATIONS

Type	Subsea Ground Point
Model	ROV Operated
Part number	5964-003
Dimensions D-handle HxLxW	135 x 250 x 25 mm
Dimensions Opening HxL	40 x 94 mm
Dimensions w/Fishtail H, Ø	480-550 mm, 112 mm
Weight in air	6,2 kg
Weight in water	5,4 kg
ROV handle	Fishtail (standard)
Ground point jaw opening	Customer specific

- Optional ROV handles (D and T-handles)

